



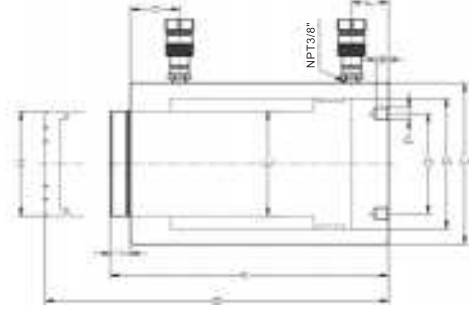
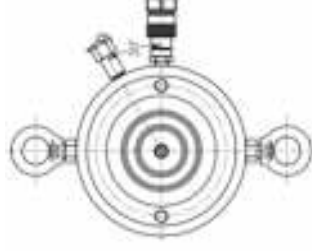
Capacity: **50-1000 ton**  
 Stroke: **50-300mm**  
 Maximum Operating Pressure: **70 MPa**

Technical parameters :

ton	Stroke (mm)	Model Number	Max. Cylinder Capacity (KN)		Oil Capacity (cm <sup>3</sup> )		Collapsed Height (mm)		Extend Height (mm)		Outside Dia. (mm)	Cylinder Bore Dia. (mm)	Plunger Dia. (mm)	Weight (kg)
			Advance	Retract	Advance	Retract	A	B	C	D				
50	50	CLRG-502	550	255	392	200	188	238	140	100	100	70	21.5	
	100	CLRG-504	550	255	784	400	238	338	140	100	70	26		
	150	CLRG-506	550	255	1176	600	288	438	140	100	70	31		
	200	CLRG-508	550	255	1568	800	338	538	140	100	70	35		
100	300	CLRG-5012	550	255	2352	1200	438	738	140	100	70	44		
	50	CLRG-1002	1077	490	770	377	216	266	188	140	100	42		
	100	CLRG-1004	1077	490	1540	754	266	366	188	140	100	49		
	150	CLRG-1006	1077	490	2310	1131	316	466	188	140	100	56		
150	200	CLRG-1008	1077	490	3080	1508	366	566	188	140	100	63		
	300	CLRG-10012	1077	490	4620	2262	466	766	188	140	100	70		
	50	CLRG-1502	1588	797	1134	565	276	276	228	170	120	66		
	100	CLRG-1504	1588	797	2269	1130	276	376	228	170	120	78		
200	150	CLRG-1506	1588	797	3403	1696	326	476	228	170	120	90		
	200	CLRG-1508	1588	797	4538	2260	376	576	228	170	120	102		
	300	CLRG-15012	1588	797	6806	3390	476	776	228	170	120	126		
	100	CLRG-2004	2198	875	3141	1374	296	396	268	200	150	109		
300	150	CLRG-2006	2198	875	4712	2061	346	496	268	200	150	121		
	200	CLRG-2008	2198	875	6282	2748	396	596	268	200	150	132		
	300	CLRG-20012	2198	875	9423	4122	496	796	268	200	150	155		
	100	CLRG-3004	3434	1654	4906	2363	327	427	320	250	180	180		
400	200	CLRG-3008	3434	1654	9812	4726	427	627	320	250	180	220		
	300	CLRG-30012	3434	1654	14718	7089	527	827	320	250	180	260		
	100	CLRG-4004	4308	1649	6154	2355	355	455	360	280	210	255		
	200	CLRG-4008	4308	1649	12308	4710	455	655	360	280	210	310		
500	300	CLRG-40012	4308	1649	18462	7065	555	855	360	280	210	375		
	100	CLRG-5004	5114	1948	8038	3133	375	475	420	320	250	326		
	200	CLRG-5008	5114	1948	16076	6266	475	675	420	320	250	394		
	300	CLRG-50012	5114	1948	24114	9399	575	875	420	320	250	462		
600	100	CLRG-6004	6300	2488	10174	4019	436	536	500	360	280	542		
	200	CLRG-6008	6300	2488	20348	8038	536	736	500	360	280	634		
	300	CLRG-60012	6300	2488	30522	12057	636	936	500	360	280	726		
	100	CLRG-8004	8790	2880	12566	4522	477	577	550	400	320	796		
800	200	CLRG-8008	8790	2880	25132	9044	577	777	550	400	320	944		
	300	CLRG-80012	8790	2880	37698	13566	677	977	550	400	320	1092		

Customized

- Features**
1. Double acting, for positive retraction.
  2. Built-in safety valve prevents accidental over-pressurization.
  3. Hard chrome plated high quality steel plungers.
  4. Removable hardened saddles protect plunger during lifting and pressing.
  5. Special painted surface to increase corrosion resistance.
  6. Plunger wiper reduces contamination, extending cylinder life.
  7. The exclusive guide ring is designed absorbs eccentric loading without galling cylinder parts.
  8. All model include quick couplings and dust-proof cap.
  9. Easy fixturing with base mounting holes.
  10. According to different work environment, special cylinder could be customized.



Technical parameters :

Model Number	Base to Advance port (mm)		Top to return port (mm)		Saddle Dia. (mm)	Saddle protrusion from Plunger (mm)	Mounting Hole Dimensions (mm)			Thread Depth (mm)		
	F	G	H	I			J	O	P	X	Thread	Thread
CLRG-502	41	41	41	70	24	70	4-M16	13				
CLRG-504	41	41	41	70	24	70	4-M16	13				
CLRG-506	41	41	41	70	24	70	4-M16	13				
CLRG-508	41	41	41	70	24	70	4-M16	13				
CLRG-5012	41	41	41	70	24	70	4-M16	13				
CLRG-1002	54	54	54	100	24	100	4-M20	16				
CLRG-1004	54	54	54	100	24	100	4-M20	16				
CLRG-1006	54	54	54	100	24	100	4-M20	16				
CLRG-1008	54	54	54	100	24	100	4-M20	16				
CLRG-10012	54	54	54	100	24	100	4-M20	16				
CLRG-1502	58	58	58	120	24	130	4-M20	16				
CLRG-1504	58	58	58	120	24	130	4-M20	16				
CLRG-1506	58	58	58	120	24	130	4-M20	16				
CLRG-1508	58	58	58	120	24	130	4-M20	16				
CLRG-15012	58	58	58	120	24	130	4-M20	16				
CLRG-2004	64	68	68	150	29	160	4-M24	24				
CLRG-2006	64	68	68	150	29	160	4-M24	24				
CLRG-2008	64	68	68	150	29	160	4-M24	24				
CLRG-20012	64	68	68	150	29	160	4-M24	24				
CLRG-3004	74	76	76	180	35	220	4-M24	24				
CLRG-3008	74	76	76	180	35	220	4-M24	24				
CLRG-30012	74	76	76	180	35	220	4-M24	24				
CLRG-4004	83	83	83	210	35	240	4-M24	24				
CLRG-4008	83	83	83	210	35	240	4-M24	24				
CLRG-40012	83	83	83	210	35	240	4-M24	24				
CLRG-5004	93	93	93	246	35	280	4-M24	24				
CLRG-5008	93	93	93	246	35	280	4-M24	24				
CLRG-50012	93	93	93	246	35	280	4-M24	24				
CLRG-6004	113	115	115	280	40	300	4-M24	24				
CLRG-6008	113	115	115	280	40	300	4-M24	24				
CLRG-60012	113	115	115	280	40	300	4-M24	24				
CLRG-8004	113	113	113	320	57	380	4-M24	24				
CLRG-8008	113	113	113	320	57	380	4-M24	24				
CLRG-80012	113	113	113	320	57	380	4-M24	24				

Capacity: **50-800 ton**  
 Stroke: **50-300mm**  
 Maximum Operating Pressure: **70 MPa**

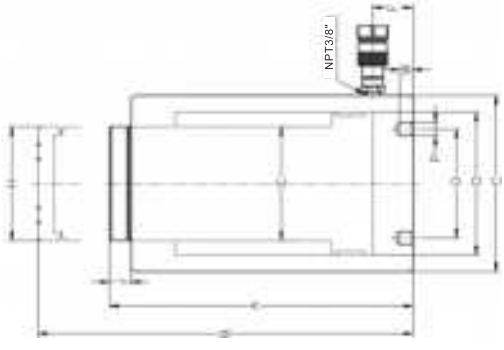
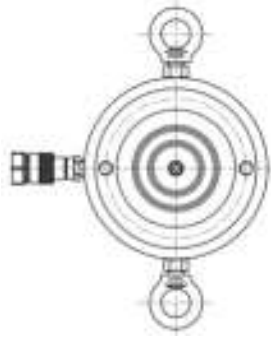


Cylinder Capacity ton (kN)	Stroke kn	Model Number	Cylinder Effective Area (cm <sup>2</sup> )	Oil Capacity (cm <sup>3</sup> )	Collapsed Height A (mm)	Extend Height B (mm)	Outside Dia. C (mm)	Cylinder Bore Diameter D (mm)	Plunger Diameter E (mm)	Base to Advance port F (mm)	Weight (kg)
50(550)	50	CLSG-502	78.5	392	172	238	140	100	70	41	21.5
	100	CLSG-504	78.5	784	222	338	140	100	70	41	26
	150	CLSG-506	78.5	1176	272	438	140	100	70	41	31
	200	CLSG-508	78.5	1568	322	538	140	100	70	41	35
100 (1077)	300	CLSG-5012	78.5	2352	422	738	140	100	70	41	44
	50	CLSG-1002	153.9	770	197	266	188	140	100	54	42
	100	CLSG-1004	153.9	1540	247	366	188	140	100	54	49
	150	CLSG-1006	153.9	2310	297	466	188	140	100	54	56
150 (1588)	200	CLSG-1008	153.9	3080	347	566	188	140	100	54	63
	300	CLSG-10012	153.9	4620	447	766	188	140	100	54	70
	50	CLSG-1502	201	1005	206	276	228	170	120	58	44
	100	CLSG-1504	201	2010	256	376	228	170	120	58	57
200 (2198)	150	CLSG-1506	201	3015	306	476	228	170	120	58	70
	200	CLSG-1508	201	4020	356	576	228	170	120	58	83
	300	CLSG-15012	201	6030	456	776	228	170	120	58	109
	50	CLSG-2002	314	1570	246	296	268	200	150	64	84
300 (3434)	150	CLSG-2006	314	4712	346	496	268	200	150	64	118
	200	CLSG-2008	314	6284	396	596	268	200	150	64	141
	300	CLSG-20012	314	9423	496	796	268	200	150	64	152
	50	CLSG-3002	490.6	2453	277	327	320	250	180	74	155
400 (4308)	150	CLSG-3006	490.6	7359	377	527	320	250	180	74	195
	200	CLSG-30012	490.6	14718	527	827	320	250	180	74	255
	50	CLSG-4002	572.3	2861	305	355	360	280	210	83	240
	150	CLSG-4006	572.3	8583	405	555	360	280	210	83	310
500 (5114)	200	CLSG-40012	572.3	17169	555	855	360	280	210	83	415
	50	CLSG-5002	803.8	4019	325	375	420	320	250	93	285
	150	CLSG-5006	803.8	12057	425	575	420	320	250	93	353
	300	CLSG-50012	803.8	24114	575	875	420	320	250	93	455
600 (6300)	50	CLSG-6002	1017.4	5087	386	436	500	360	280	113	487
	150	CLSG-6006	1017.4	15261	486	636	500	360	280	113	579
	200	CLSG-60012	1017.4	30522	636	936	500	360	280	113	717
	50	CLSG-8002	1256	6280	427	477	550	400	320	113	712
800 (8790)	150	CLSG-8006	1256	18840	527	677	550	400	320	113	860
	200	CLSG-80012	1256	37698	677	977	550	400	320	113	1082

Customized

Features

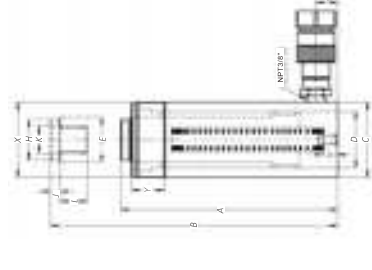
1. Single acting, loads return.
2. Built-in safety valve prevents accidental over-pressurization.
3. Hard chrome plated high quality steel plungers.
4. The exclusive guide ring is designed absorbs eccentric loading without galling cylinder parts.
5. Removable hardened grooved saddles.
6. Special painted surface to increase corrosion resistance.
7. Plunger wiper reduces contamination, extending cylinder life.
8. All model include quick couplings and dust-proof cap.
9. Easy fixturing with base mounting holes.



Model Number	Saddle Dia. (mm)		Saddle protrusion from Plunger (mm)	Mounting Hole Dimensions		
	H	J		Boil Circle	Thread	Thread Depth
	(mm)	(mm)	(mm)	O	P	W
CLSG-502	70	24	24	70	4-M16	13
CLSG-504	70	24	24	70	4-M16	13
CLSG-506	70	24	24	70	4-M16	13
CLSG-508	70	24	24	70	4-M16	13
CLSG-5012	70	24	24	70	4-M16	13
CLSG-1002	100	24	24	100	4-M20	16
CLSG-1004	100	24	24	100	4-M20	16
CLSG-1006	100	24	24	100	4-M20	16
CLSG-1008	100	24	24	100	4-M20	16
CLSG-10012	100	24	24	100	4-M20	16
CLSG-1502	120	24	24	130	4-M20	16
CLSG-1504	120	24	24	130	4-M20	16
CLSG-1506	120	24	24	130	4-M20	16
CLSG-1508	120	24	24	130	4-M20	16
CLSG-15012	120	24	24	130	4-M20	16
CLSG-2002	150	29	29	160	4-M24	24
CLSG-2006	150	29	29	160	4-M24	24
CLSG-20012	150	29	29	160	4-M24	24
CLSG-3002	180	35	35	220	4-M24	24
CLSG-3006	180	35	35	220	4-M24	24
CLSG-30012	180	35	35	220	4-M24	24
CLSG-4002	210	35	35	240	4-M24	24
CLSG-4006	210	35	35	240	4-M24	24
CLSG-40012	210	35	35	240	4-M24	24
CLSG-5002	246	35	35	280	4-M24	24
CLSG-5006	246	35	35	280	4-M24	24
CLSG-50012	246	35	35	280	4-M24	24
CLSG-6002	280	40	40	300	4-M24	24
CLSG-6006	280	40	40	300	4-M24	24
CLSG-60012	280	40	40	300	4-M24	24
CLSG-8002	320	57	57	380	4-M24	24
CLSG-8006	320	57	57	380	4-M24	24
CLSG-80012	320	57	57	380	4-M24	24



Capacity: **5-95 ton**  
 Stroke: **25-362mm**  
 Maximum Operating Pressure: **70 MPa**



Cylinder Capacity	Stroke (mm)	Model Number	Oil Capacity (cm <sup>3</sup> )	Collapsed Height (mm)	Extend Height (mm)	Outside Dia. (mm)	Cylinder Bore Diameter (mm)	Plunger Dia. (mm)	Weight (kg)
5(45)	25	RC-51	18	110	135	40	30	25	1
	76	RC-53	54	165	241	40	30	25	1.6
	127	RC-55	90	215	342	40	30	25	2
	177	RC-57	125	273	450	40	30	25	2.6
	232	RC-59	164	323	555	40	30	25	3.1
10(101)	54	RC-102	86	121	175	59	45	35	2.3
	105	RC-104	167	171	276	59	45	35	3
	156	RC-106	248	247	403	59	45	35	4.1
	203	RC-108	323	298	501	59	45	35	5.8
	257	RC-1010	409	349	606	59	45	35	6.6
15(142)	304	RC-1012	483	400	707	59	45	35	7.5
	356	RC-1014	566	450	806	59	45	35	8.3
	25	RC-151	53	124	149	70	52	42	3.5
	51	RC-152	108	149	200	70	52	42	4
	101	RC-154*	214	200	301	70	52	42	5
25(232)	152	RC-156*	323	271	423	70	52	42	7
	203	RC-158	431	322	525	70	52	42	8
	254	RC-1510	539	373	627	70	52	42	9
	305	RC-1512	647	423	728	70	52	42	10
	356	RC-1514	756	474	830	70	52	42	11
30(295)	26	RC-251	86	139	165	85	65	56	6
	50	RC-252	166	165	215	85	65	56	7
	102	RC-254	338	215	317	85	65	56	8
	158	RC-256	524	273	431	85	65	56	10
	210	RC-258	696	323	533	85	65	56	12
50(498)	261	RC-2510	866	374	635	85	65	56	14
	311	RC-2512	1031	425	736	85	65	56	15
	362	RC-2514	1201	476	838	85	65	56	17
	50	RC-302	209	228	278	101	73	60	13
	100	RC-304	418	278	378	101	73	60	16
75(718)	209	RC-308	874	387	596	101	73	60	19
	300	RC-3012	1255	478	778	101	73	60	27
	51	RC-502	361	176	227	127	95	80	15
	101	RC-504	716	227	328	127	95	80	19
	159	RC-506	1126	282	441	127	95	80	23
95(933)	337	RC-5013	2388	460	797	127	95	80	37
	156	RC-756	1620	285	441	150	115	100	33
	333	RC-7513	3457	492	825	150	115	100	54
	168	RC-1006	2229	357	525	177	130	112	59
	260	RC-10010	3449	449	709	177	130	112	72

Features

1. Single-acting, spring return.
2. High strength alloy steel for durability.
3. The exclusive guide Ring is designed to absorb eccentric loading without galling cylinder parts.
4. Special painted surface to increase corrosion resistance.
5. Easy fitting with collar threads, plunger threads and base mounting holes.
6. Removable hardened grooved saddle.
7. All models include quick coupling and dust cap.
8. Customizable with special requirement.

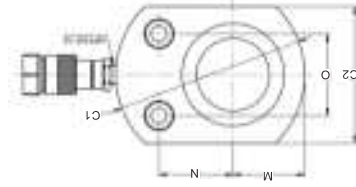
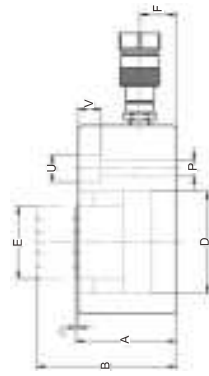
Model Number	Base to Advance port (mm)		Saddle Diameter (mm)	Saddle Protr. from plgr. (mm)	Plunger Internal Thread	Plunger Thread Length (mm)	Base Mounting Holes			Collar Thread	Collar Thread Length (mm)
	F	H					Bolt Circle (mm)	Thread	Depth		
RC-51	22	25	6	6	1/2"-16UN	14	25	1/2"-20UN	6	1/2"-16	28
RC-53	22	25	6	6	1/2"-16UN	14	25	1/2"-20UN	6	1/2"-16	28
RC-55	22	25	6	6	1/2"-16UN	14	25	1/2"-20UN	6	1/2"-16	28
RC-57	22	25	6	6	1/2"-16UN	14	25	1/2"-20UN	6	1/2"-16	28
RC-59	22	25	6	6	1/2"-16UN	14	25	1/2"-20UN	6	1/2"-16	28
RC-102	19	35	6	6	1"-8UN	19	39	1/2"-18UN	12	2 1/4"-14	28
RC-104	19	35	6	6	1"-8UN	19	39	1/2"-18UN	12	2 1/4"-14	28
RC-106	20	35	6	6	1"-8UN	19	39	1/2"-18UN	12	2 1/4"-14	28
RC-108	22	35	6	6	1"-8UN	19	39	1/2"-18UN	12	2 1/4"-14	28
RC-1010	22	35	6	6	1"-8UN	19	39	1/2"-18UN	12	2 1/4"-14	28
RC-1012	22	35	6	6	1"-8UN	19	39	1/2"-18UN	12	2 1/4"-14	28
RC-1014	22	35	9	9	1"-8UN	25	47	1/2"-16UN	12	2 1/4"-16	30
RC-151	20	38	9	9	1"-8UN	25	47	1/2"-16UN	12	2 1/4"-16	30
RC-152	20	38	9	9	1"-8UN	25	47	1/2"-16UN	12	2 1/4"-16	30
RC-154*	20	38	9	9	1"-8UN	25	47	1/2"-16UN	12	2 1/4"-16	30
RC-156*	25	38	9	9	1"-8UN	25	47	1/2"-16UN	12	2 1/4"-16	30
RC-158	25	38	9	9	1"-8UN	25	47	1/2"-16UN	12	2 1/4"-16	30
RC-1510	25	38	9	9	1"-8UN	25	47	1/2"-16UN	12	2 1/4"-16	30
RC-1512	25	38	9	9	1"-8UN	25	47	1/2"-16UN	12	2 1/4"-16	30
RC-1514	25	38	10	10	1"-8UN	25	47	1/2"-16UN	12	2 1/4"-16	30
RC-251	25	50	10	10	1 1/2"-16UN	25	58	1/2"-13UN	19	3 1/8"-12	49
RC-252	25	50	10	10	1 1/2"-16UN	25	58	1/2"-13UN	19	3 1/8"-12	49
RC-254	25	50	10	10	1 1/2"-16UN	25	58	1/2"-13UN	19	3 1/8"-12	49
RC-256	25	50	10	10	1 1/2"-16UN	25	58	1/2"-13UN	19	3 1/8"-12	49
RC-258	25	50	10	10	1 1/2"-16UN	25	58	1/2"-13UN	19	3 1/8"-12	49
RC-2510	25	50	10	10	1 1/2"-16UN	25	58	1/2"-13UN	19	3 1/8"-12	49
RC-2512	25	50	10	10	1 1/2"-16UN	25	58	1/2"-13UN	19	3 1/8"-12	49
RC-2514	25	50	10	10	1 1/2"-16UN	25	58	1/2"-13UN	19	3 1/8"-12	49
RC-302	36	50	10	10	1 1/2"-16UN	25	70	1/2"-13UN	19	3 1/8"-12	49
RC-304	36	50	10	10	1 1/2"-16UN	25	70	1/2"-13UN	19	3 1/8"-12	49
RC-308	36	50	10	10	1 1/2"-16UN	25	70	1/2"-13UN	19	3 1/8"-12	49
RC-3012	36	50	10	10	1 1/2"-16UN	25	70	1/2"-13UN	19	3 1/8"-12	49
RC-502	33	50	10	10	1 1/2"-16UN	25	95	1/2"-13UN	18	5 1/4"-12	55
RC-504	33	50	10	10	1 1/2"-16UN	25	95	1/2"-13UN	18	5 1/4"-12	55
RC-506	33	50	10	10	1 1/2"-16UN	25	95	1/2"-13UN	18	5 1/4"-12	55
RC-5013	33	50	10	10	1 1/2"-16UN	25	95	1/2"-13UN	18	5 1/4"-12	55
RC-756	41	50	10	10	1 1/2"-16UN	25	110	1/2"-13UN	15	5 7/8"-12	44
RC-7513	41	50	10	10	1 1/2"-16UN	25	110	1/2"-13UN	15	5 7/8"-12	44
RC-1006	41	50	10	10	1 1/2"-16UN	25	139	1/2"-10UN	25	6 7/8"-12	44
RC-10010	41	50	10	10	1 1/2"-16UN	25	139	1/2"-10UN	25	6 7/8"-12	44



Capacity: **10-150 ton**  
 Stroke: **11-80mm**  
 Maximum Operating Pressure: **70 MPa**

**Features**

1. Single-acting, spring return.
2. No saddle required with grooved plunger end.
3. Two plunger threads on grooved plunger end for particular needs.
4. Special painted surface to increase corrosion resistance.
5. All models include quick coupling and dust cap.
6. Flat design used in confined spaces.
7. Easy carrying with handles on some models (Capacity over 75tons).
8. Customizable with special requirement.



Model Number	Mounting Hole Dimensions				
	Bolt Circle	Hole Dia	Counter Bore Dia.	Counter bore Depth	V
	O (mm)	P (mm)	U (mm)	W (mm)	
RSM-100	36.6	7.1	10.7	7.9	
RSM-200	49.3	10	15.1	9.9	
RSM-300	52.3	10	15.9	11.2	
RSM-500	66.5	11	19	12.7	
RSM-750	76.2	13.5	20.6	14.2	
RSM-1000	117.3	13.5	20.6	14.2	

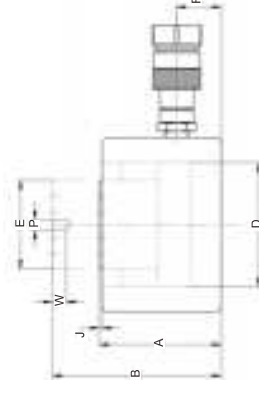
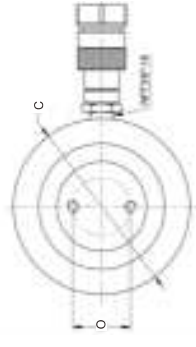
Cylinder Capacity ton(kN)	Stroke (mm)	Model Number	Oil Capacity (cm <sup>3</sup> )	Collapsed Height (mm)		Extend Height (mm)	Outside Dia. (mm)	Cylinder Bore Dia. (mm)	Plunger Diameter (Thread) (mm)	Base to Advance port (mm)	Saddle Profusion from Plunger (mm)			Plungerto Mounting Hole (mm)		Weight (kg)
				A	B						J	M	N	N		
10(101)	11	RSM-100	18	44	55	83X60	45	35	23	1	31.5	34	1.4			1.4
20(201)	12	RSM-200	37	52	64	102X80	63	50	23	1	41	39	2.2			2.2
30(295)	13	RSM-300	59	58	71	117X97	76	60	23	1	48.5	47	4.2			4.2
50(549)	16	RSM-500	125	67	83	150X125	100	80	23	1	63	60	7.4			7.4
75(718)	16	RSM-750	187	79	96	177X152	122	100	21	1	76.5	73	12.7			12.7
100(887)	16	RSM-1000	246	87	103	203X179	140	112	23	1	89.5	84	15.5			15.5
150(1386)	16	RSM-1500	371	98	114	236X212	170	145	25	2	106	92	28.7			28.7



Capacity: **10-150 ton**  
 Stroke: **11-80mm**  
 Maximum Operating Pressure: **70 MPa**

**Features**

1. Single-acting, spring return.
2. No saddle required with grooved plunger end.
3. Two plunger threads on grooved plunger end for particular needs.
4. Special painted surface to increase corrosion resistance.
5. All models include quick coupling and dust cap.
6. Low profile design, fit in narrow application area
7. Easy carrying with handles on some models (Capacity over 50tons).
8. Customizable with special requirement.



Model Number	Mounting Hole Dimensions			
	Bolt Circle	Hole Dia.	Thread Depth	W
	O (mm)	P (mm)	W (mm)	
RCS-101	26	M4	18	
RCS-201	39	M5	8	
RCS-302	39	M5	8	
RCS-502	39	M5	8	
RCS-752	55	M8	10	
RCS-1002	55	M8	10	
RCS-1502	55	M8	10	
RCS-1504	55	M8	10	

Cylinder Capacity ton(kN)	Stroke (mm)	Model Number	Oil Capacity (cm <sup>3</sup> )	Collapsed Height (mm)		Extend Height (mm)	Outside Dia. (mm)	Cylinder Bore Diameter (mm)	Plunger Diameter (Thread) (mm)	Base to Advance port (mm)	Saddle Profusion from Plunger (mm)		Plungerto Mounting Hole (mm)		Weight (kg)
				A	B						J	M	N	N	
10(101)	38	RCS-101	60	88	126	78	45	35	19	2	2	2	2	4	6.9
20(201)	45	RCS-201	140	97	142	96	63	50	19	2	2	2	2	13.8	13.3
30(295)	64	RCS-302	290	117	181	109	76	60	19	2	2	2	2	19	19
50(549)	60	RCS-502	471	120	180	120	100	80	21	2	2	2	2	24.5	24.5
75(718)	50	RCS-752	584	116	166	157	122	100	21	2	2	2	2	42	42
100(887)	57	RCS-1002	877	141	198	178	140	112	31	2	2	2	2	50	50
150(1386)	51	RCS-1502	1184	141	192	215	170	145	28	2	2	2	2		
150(1386)	80	RCS-1504	1860	170	250	215	170	145	28	2	2	2	2		

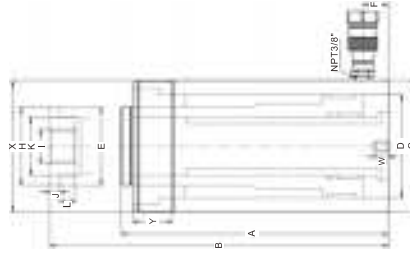
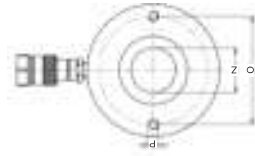
## RCH-Series, Single-Acting, Hollow Plunger Cylinders



Capacity: **13-95 ton**  
 Stroke: **42-155mm**  
 Maximum Operating Pressure: **70 MPa**

### Features

- Hollow plunger design allows for both, pull and push forces
- The exclusive guide Ring is designed absorbs eccentric loading without galling cylinder parts
- Single-acting, spring return
- Easy fixturing with collar threads
- Special painted surface to increase corrosion resistance
- Dual dust-proof ring structure remains cylinder internal cleaning
- Floating center tube is designed to increase product life
- All models include quick coupling and dust cap.
- Customizable with special requirement.



Cylinder Capacity ton(kN)	Stroke (mm)	Model Number	Oil Capacity (cm <sup>3</sup> )	Collapsed Height		Extend Height (mm)	Outside Dia. (mm)	Cylinder Bore Dia. (mm)	Plunger Diameter (Thread)	Weight (kg)
				A	B					
13(125)	42	RCH-121	76	130	172	76	55	55	35.5	3.4
	76	RCH-123	138	184	260	76	55	55	35.5	5.2
20(215)	49	RCH-202	174	162	211	100	76	76	54.5	8.2
	155	RCH-206	550	306	461	100	76	76	54.5	15
30(326)	64	RCH-302	307	180	244	115	90	90	64.5	11.5
	155	RCH-306	744	330	485	115	90	90	64.5	21.5
60(576)	76	RCH-603	640	247	323	159	125	125	94.5	28.2
	153	RCH-606	1288	323	476	159	125	125	94.5	35.5
95(931)	76	RCH-1003	1028	254	330	212	165	165	125	63.5

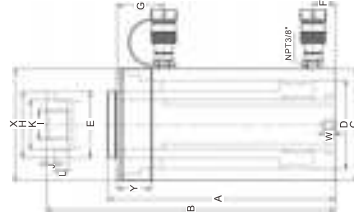
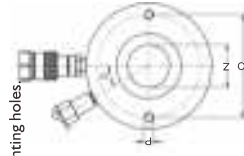
## RRH-Series Double-Acting, Hollow Plunger Cylinders

### Features

- Hollow plunger cylinders allow for both pull and push forces.
- Double-acting cylinder version for fast retraction.
- Built-in safety valve prevents accidental over-pressurization.
- Special painted surface to increase corrosion resistance.
- Dual dust ring structure remains cylinder internal cleaning.
- The exclusive guide Ring is designed absorbs eccentric loading, without galling cylinder part.
- Floating center tube is designed to increase product life.
- Easy fixturing with collar threads, plunger threads and base mounting holes



Capacity: **30-150 ton**  
 Stroke: **38-258mm**  
 Maximum Operating Pressure: **70 MPa**



Cylinder Capacity ton(kN)	Stroke (mm)	Model Number	Max Cylinder Capacity		Oil Capacity		Collapsed Height (mm)	Extend Height (mm)	Outside Dia. (mm)	Cylinder Bore Dia. (mm)	Plunger Diameter (Thread)	Weight (kg)
			Advance	Retract	Advance	Retract						
30	178	RRH-307	336	216	855	550	330	508	115	90	64.5	21
	258	RRH-3010	336	216	1240	798	431	689	115	90	64.5	27
60	89	RRH-603	589	368	749	468	247	336	159	125	94.5	28
	166	RRH-606	589	368	1398	873	323	489	159	125	94.5	35
	257	RRH-6010	589	368	2164	1352	438	695	159	125	94.5	45
95	38	RRH-1001	947	637	514	346	165	203	212	165	125	33
	76	RRH-1003	947	637	1028	692	254	330	212	165	125	61
	153	RRH-1006	947	637	2070	1394	342	495	212	165	125	79
	257	RRH-10010	947	637	3477	2341	460	717	212	165	125	106
145	203	RRH-1508	1445	758	4191	2198	359	562	247	190	150	111

Model Number	Base to Advance port		Top to return port		Saddle Dia. (mm)	Saddle Internal Thread	Saddle protrusion from Plunger (mm)	Plunger Internal Thread		Plunger Thread Length (mm)	Plunger Thread Length (mm)	Mounting Hole Dimensions			Center Hole Dia. (mm)
	F	G	H	I				J	K			L	O	P	
RRH-307	25	60	64	1 1/8"-7	9	1 17/16"-16UN	22	92.2	15.7	15.7	47/16"-12	42	33.3		
RRH-3010	25	60	64	1 1/8"-7	9	1 17/16"-16UN	22	92.2	15.7	15.7	47/16"-12	42	33.3		
RRH-603	31	66	94	1 1/2"-5 1/2"	12	2 1/2"-16UN	19	130.3	14	14	6 1/8"-12	48	53.8		
RRH-606	31	66	94	1 1/2"-5 1/2"	12	2 1/2"-16UN	19	130.3	14	14	6 1/8"-12	48	53.8		
RRH-6010	31	66	94	1 1/2"-5 1/2"	12	2 1/2"-16UN	19	130.3	14	14	6 1/8"-12	48	53.8		
RRH-1001	34	45	125	2 1/8"-8	12	4"-16UN	25	177.8	19	19	8 1/8"-12	60	79		
RRH-1003	34	85	125	2 1/8"-8	12	4"-16UN	25	177.8	19	19	8 1/8"-12	60	79		
RRH-1006	34	85	125	2 1/8"-8	12	4"-16UN	25	177.8	19	19	8 1/8"-12	60	79		
RRH-10010	34	85	125	2 1/8"-8	12	4"-16UN	25	177.8	19	19	8 1/8"-12	60	79		
RRH-1508	38	60	127		13	4 1/8"-12UN	25								

Model Number	Base to Advance port (mm)	Saddle Diameter (mm)	Saddle Protrusion from plgr. (mm)	Saddle Internal Thread	Plunger Internal Thread	Plunger Thread Length (mm)	Base Mounting Holes			Collar Thread Length (mm)	Center Hole Dia. (mm)
							Bolt Circle (mm)	Thd. Depth (mm)	W		
RCH-121	20					16	50.8	9	9	30	19.5
RCH-123	20						50.8	12.7	12.7	30	19.5
RCH-202	23	54	9	1"-8	1 1/8"-16UN	19	82.6	9.4	9.4	38	26.9
RCH-302	25	64	9	1 1/8"-7	1 1/8"-16UN	22	92.2	14	14	42	33.3
RCH-306	25	64	9	1 1/8"-7	1 1/8"-16UN	22	92.2	14	14	42	33.3
RCH-603	31	94	12	1 1/2"-5 1/2"	2 1/2"-16UN	19	130.3	14	14	48	53.8
RCH-606	31	94	12	1 1/2"-5 1/2"	2 1/2"-16UN	19	130.3	14	14	48	53.8
RCH-1003	34	125	12	2 1/8"-8	4"-16UN	25	177.8	19	19	60	79

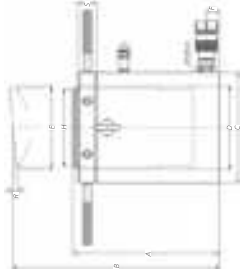
## CLL-Series, Single-Acting Lock Nut Cylinders



Capacity: **50-800 ton**  
 Stroke: **42-155mm**  
 Maximum Operating Pressure: **70 MPa**

### Features

1. Single-acting, load return.
2. Special painted surface to increase corrosion resistance.
3. Lock nut ensure the safety of long time load holding.
4. Overflow port function could limit the stroke.
5. Removable hardened grooved saddles protect plunger during lifting and pressing.
6. The exclusive guide Ring is designed absorbs eccentric loading, without galling cylinder parts.
7. According to different work environment, special cylinder could be customized.
8. All model include quick couplings (3/8" NPT) and dust-proof cap.



Cylinder Capacity	Stroke	Model Number	Cylinder Effective Area	Oil Capacity	Collapsed Height	Extend Height	Outside Dia.	Cylinder Bore Dia.	Plunger Diameter (Thread)	Base to Advance Port	Saddle Dia.	Saddle Max. Tilt Angle	Lock nut Height	Weight
ton(kN)	mm		(cm <sup>2</sup> )	(cm <sup>3</sup> )	(mm)	(mm)	(mm)	(mm)	(mm)	(mm)	(mm)	(°)	(mm)	(kg)
50(550)	50	CLL-502	78.5	392	192	210	140	100	Tr59x4	24	90	5°	30	18
	100	CLL-504	78.5	784	242	315	140	100	Tr59x4	24	90	5°	30	25
	150	CLL-506	78.5	1176	292	425	140	100	Tr59x4	24	90	5°	30	33
	200	CLL-508	78.5	1568	342	547	140	100	Tr59x4	24	90	5°	30	41
100(1077)	300	CLL-5012	78.5	2352	442	747	140	100	Tr59x4	24	90	5°	30	53
	50	CLL-1002	153.9	770	213	220	188	140	Tr139x6	26	130	5°	40	34
	100	CLL-1004	153.9	1540	263	357	188	140	Tr139x6	26	130	5°	40	50
	150	CLL-1006	153.9	2310	313	462	188	140	Tr139x6	26	130	5°	40	61
150(1588)	200	CLL-1008	153.9	3080	363	570	188	140	Tr139x6	26	130	5°	40	73
	300	CLL-10012	153.9	4620	463	770	188	140	Tr139x6	26	130	5°	40	93
	50	CLL-1502	226.9	1134	209	259	228	170	Tr159x6	49	160	5°	38	56
	100	CLL-1504	226.9	2269	259	359	228	170	Tr159x6	49	160	5°	38	70
200(2198)	150	CLL-1506	226.9	3403	309	459	228	170	Tr159x6	49	160	5°	38	83
	200	CLL-1508	226.9	4538	359	559	228	170	Tr159x6	49	160	5°	38	97
	300	CLL-15012	226.9	6806	459	759	228	170	Tr159x6	49	160	5°	38	124
	50	CLL-2002	314	1570	243	293	268	200	Tr199x6	51	186	5°	52	93
300(3434)	150	CLL-2006	314	4712	343	493	268	200	Tr199x6	51	186	5°	52	131
	200	CLL-20012	314	9423	493	793	268	200	Tr199x6	51	186	5°	52	189
	50	CLL-3002	490.6	2453	295	345	320	250	Tr249x6	59	236	5°	60	179
	100	CLL-3006	490.6	7359	395	545	320	250	Tr249x6	59	236	5°	60	240
400(4308)	300	CLL-30012	490.6	14718	545	845	320	250	Tr249x6	59	236	5°	60	331
	50	CLL-4002	615.4	3077	335	385	360	280	Tr269x6	70	256	5°	70	266
	100	CLL-4006	615.4	9231	435	585	360	280	Tr269x6	70	256	5°	70	345
	200	CLL-40012	615.4	18462	585	885	360	280	Tr269x6	70	256	5°	70	464
500(5114)	50	CLL-5002	803.8	4019	375	425	420	320	Tr319x6	80	306	5°	80	358
	100	CLL-5006	803.8	12057	475	625	420	320	Tr319x6	80	306	5°	80	454
	200	CLL-50012	803.8	24114	625	925	420	320	Tr319x6	80	306	5°	80	597
	50	CLL-6002	1017.4	5087	395	445	500	360	Tr359x6	85	346	5°	85	490
600(6300)	100	CLL-6006	1017.4	15261	495	645	500	360	Tr359x6	85	346	5°	85	614
	200	CLL-60012	1017.4	30522	645	945	500	360	Tr359x6	85	346	5°	85	800
	50	CLL-8002	1256	6280	445	505	550	400	Tr399x6	100	386	5°	100	843
	100	CLL-8006	1256	18840	555	705	550	400	Tr399x6	100	386	5°	100	1028
800(8790)	300	CLL-80012	1256	37698	705	1005	550	400	Tr399x6	100	386	5°	100	1306

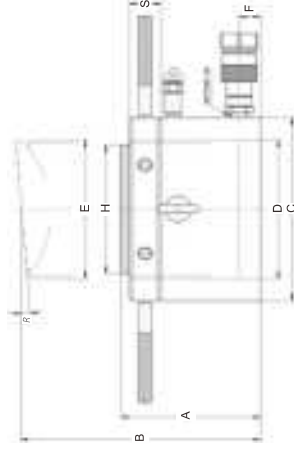
## CLP-Series, Single-Acting Pancake Lock Nut Cylinders



Capacity: **60-520 ton**  
 Stroke: **45-50mm**  
 Maximum Operating Pressure: **70 MPa**

### Features

1. Lock nut ensure the safety of long time load holding.
2. Low profile design, fit in narrow application area.
3. Single-acting, load return.
4. Overflow port function could limit the stroke.
5. Special synthetic coating surface improved corrosion resistance and reduce the friction when operating.
6. Double-acting mechanical lock nut cylinder could be customized.
7. All model include quick couplings (3/8" NPT) and dust-proof cap.



Cylinder Capacity	Stroke	Model Number	Cylinder Effective Area	Oil Capacity	Collapsed Height	Extend Height	Outside Dia.	Cylinder Bore Dia.	Plunger Diameter (Thread)	Base to Advance Port	Saddle Dia.	Saddle Max. Tilt Angle	Lock nut Height	Weight
ton(kN)	(mm)		(cm <sup>2</sup> )	(cm <sup>3</sup> )	(mm)	(mm)	(mm)	(mm)	(mm)	(mm)	(mm)	(°)	(mm)	(kg)
60 (606)	50	CLP-602	88.2	432	125	175	140	106	Tr104x4	19	96	4°	28	15
100(1027)	50	CLP-1002	147.3	734	140	187	140	137	Tr136x6	21	126	4°	31	27
160(1619)	45	CLP-1602	232.2	1040	148	193	224	172	Tr171x6	27	160	4°	40	45.5
200(1999)	45	CLP-2002	285.6	1285	155	200	245	190.7	Tr190x6	30	180	4°	43	57
260(2567)	45	CLP-2502	366.2	1650	159	204	275	216	Tr215x6	32	200	4°	44	74
400(3916)	45	CLP-4002	572.3	2517	178	223	350	270	Tr266x6	41	251	4°	55	134
520(5114)	45	CLP-5002	730.2	3287	192	237	400	305	Tr304x6	48	289	3°	62	188