



Maximum Torque: **48666Nm**

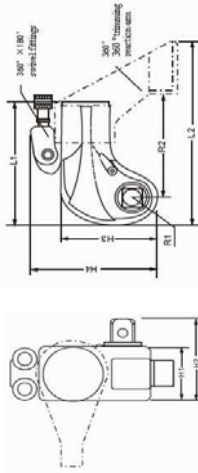
Square Drive Range: **3/4- 2 1/2 inch**

Maximum Operating Pressure: **70 MPa**

Features & Benefits

- Compact, uni-body designed to give housing maximum strength with minimum weight. It was made of durable , high-strength, light weight aircraft alloy.
- Dual rotation direction (360°X-axis * 180°Y-axis) hydraulic swivel manifold, connect with screwed quick couplings.
- With automatic pump, square drive wrench could automatic to tighten or loosen.
- Accurate anti- reverse pawl improved the preload accuracy, and could be quick released.
- Constant torque output accuracy up-to ± 3%.
- High speed, double-acting operation.
- Oxidation treatment provide excellent corrosion protection and durability in harsh environment.

Drawing



BTW series drive torque wrench specs

Model	07BTW	1BTW	3BTW	5BTW	8BTW	10BTW	15BTW	20BTW	25BTW	35BTW
Torque range (N.m)	112-1120	183-1837	451-4512	752-7528	1078-10780	1551-15516	2066-20627	2666-26664	3572-34725	4866-48666
Scope of nut (M)	14-30	16-36	22-48	27-56	30-64	36-72	39-80	42-90	48-100	64-120
Weight(KG)	1.8	2	4	7	9.1	13.1	18	25	31	45
L1 (mm)	110.8	130	166	198	213	231	270	295	314	355
L2 (mm)	139.3	182	241	281	308	336	400	443	464	489
H1 (mm)	42	50	68	80	90	100	110	120	137	153
H2 (mm)	65.8	72	95	123	130	141	179	182	200	217
H3 (mm)	76.2	99	130	155	171	187	201	228	255	290
H4 (mm)	108.1	144	176	198	216	230	244	268	295	330
R1 (mm)	20.5	26	34	39	47	51	55	59	67	79
R2 (mm)	68.3	99	134	152	171	174	195	250	251	271
Drive	3/4"	3/4"	1"	1-1/2"	1-1/2"	1-1/2"	2-1/2"	2-1/2"	2-1/2"	2-1/2"

Products technical:

- Made of high-grade chromium molybdenum steel
- According to German standard (made by DIN standard 3121&3129)
- Special heat treatment process is adopted to guarantee lifetime use.
- The following are metric sleeve sizes, which can be customized in inch or various specifications.



BTW series socket specs:

3/4 BTW series socket specs(3/4")

Bolt specification	Bolt on edge	L1	L2	D1	D2
M16	24	54	32	40	40
M18	27	54	32	42	42
M20	30	54	33	46	44
M22	34	54	32	48	44
M24	36	57	32	53	44
M27	41	58	33	60	44
M30	46	63	33	66	44
M33	50	63	40	71	44
M36	55	70	45	77	54

1BTW-3 BTW series socket specs(1")

Bolt specification	Bolt on edge	L1	L2	D1	D2
M20	30	59	32	54	54
M22	34	59	32	58	58
M24	36	62	32	59	59
M27	41	65	38	67	54
M30	46	65	38	74	54
M33	50	70	43	79	60
M36	55	80	52	84	60
M39	60	85	57	89	60
M42	65	85	58	98	70
M45	70	90	62	104	70
M48	75	95	65	108	70

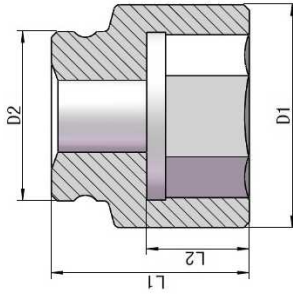
5, 8, 10 BTW series socket specs(1-1/2")

Bolt specification	Bolt on edge	L1	L2	D1	D2
M24	36	85	44	74	74
M27	41	85	44	74	74
M30	46	85	44	74	74
M33	50	90	45	79	79
M36	55	90	45	84	84
M39	60	100	45	94	94
M42	65	100	45	98	80
M45	70	105	50	104	80
M48	75	110	50	104	85
M52	80	115	55	118	85
M56	85	125	60	128	90
M60	90	125	60	139	90
M64	95	130	65	139	90
M68	100	135	70	144	90
M72	105	135	70	149	90
M76	110	135	70	158	90
M80	115	135	70	159	90
M85	120	135	70	168	95
M90	130	135	93	189	95

20, 25, 35 BTW series socket specs(2-1/2")

Bolt specification	Bolt on edge	L1	L2	D1	D2
M36	55	100	57	86	114
M39	60	100	52	119	119
M42	65	100	52	119	119
M45	70	120	67	128	128
M48	75	120	67	128	128
M52	80	130	71	128	128
M56	85	130	71	129	129
M60	90	140	73	139	139
M64	95	140	73	139	139
M68	100	140	81	148	130
M72	105	150	89	149	130
M76	110	150	90	158	130
M80	115	150	96	168	130
M85	120	150	98	178	130
M90	130	170	98	188	130
M95	135	170	114	198	130
M100	145	170	122	210	152
M105	150	190	140	216	152
M110	155	190	140	229	152
M115	165	190	140	241	152

BTW series socket drawing:



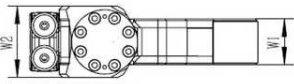
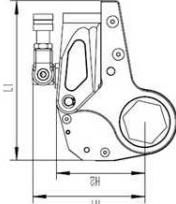


Maximum Torque: **70813Nm**
 A/F Range: **19-155mm**
 Maximum Pressure: **70 MPa**

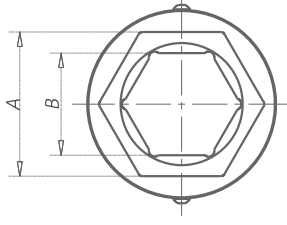
Features & Benefits

The low profile design is made to fit in small spaces. Rigid steel design-durability, reliability and safety. Interchangeable head design, no tools needed for changing.
 Versatility: one hydraulic drive unit per torque capacity can be used to drive any hexagon head within that range.
 Constant torque output accuracy up-to ±3%.
 Dual rotation direction (360°X-axis * 180°Y-axis) hydraulic swivel manifold, connect with screwed quick couplings.

Drawing



Drawing



BHW series torque wrench specs

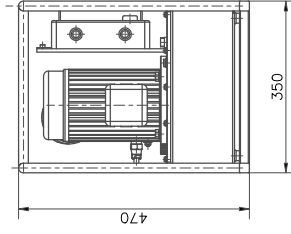
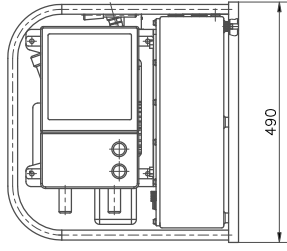
Model	2BHW	4BHW	8BHW	14BHW	18BHW	30BHW	50BHW
Torque range (Nm)	232-2328	241-2414	585-5858	647-6474	1094-10941	1177-11774	1558-17639
A/F (mm)	19-55	60	34-65	70-60	41-95	100-105	117-1174
Power head weight (KG)	0.9	0.9	1.7	3	3.1	3	3.1
Working head weight (KG)	1.5	1.5	3.4	6.3	11.4	14.3	20.5
L (mm)	196	196	258	263	30	311	360
H1 (mm)	126	129	163	173	192	201	225
H2 (mm)	102	105	136	146	168	177	204
W1 (mm)	32	32	42	42	53	53	64
W2 (mm)	51	51	66	66	83	83	83

Wrench Model	Work first Model	Applicable to edge (mm)	Variable diameter set specifications and model						Locking ring Model	
			Model	A/B (mm)	Model	A/B (mm)	Model	A/B (mm)	Model	A/B (mm)
2BHW	2BHWG-50	50	2G5041	50/41	2G5036	50/36	2G5032	50/32	H-50	H-50
	2BHWG-45	46	2G4634	46/34	2G4632	46/32	2G4630	46/30	H-46	H-46
	2BHWG-41	41	2G4132	41/32	2G4130	41/30	2G4127	41/27	H-41	H-41
	2BHWG-36	36	2G3630	36/30	2G3627	36/27			H-36	H-36
	2BHWG-32	32	2G3227	32/27					H-32	H-32
	2BHWG-27	27								
4BHW	4BHWG-65	65	4G6555	65/55	4G6550	65/50	4G6546	65/46	H-65	H-65
	4BHWG-60	60	4G6050	60/50	4G6046	60/46	4G6041	60/41	H-60	H-60
	4BHWG-55	55	4G5546	55/46	4G5541	55/41	4G5536	55/36	H-55	H-55
	4BHWG-50	50	4G5041	50/41	4G5036	50/36	4G5032	50/32	H-50	H-50
	4BHWG-46	46	4G4636	46/36	4G4632	46/32	4G4630	46/30	H-46	H-46
	4BHWG-41	41	4G4132	41/32	4G4130	41/30	4G4127	41/27	H-41	H-41
8BHW	8BHWG-80	80	8G8080	80/80	8G8075	80/75	8G8070	80/70	H-80	H-80
	8BHWG-75	75	8G7565	75/65	8G7560	75/60	8G7555	75/55	H-75	H-75
	8BHWG-70	70	8G7060	70/60	8G7055	70/55	8G7050	70/50	H-70	H-70
	8BHWG-65	65	8G6555	65/55	8G6550	65/50	8G6546	65/46	H-65	H-65
	8BHWG-60	60	8G6050	60/50	8G6046	60/46			H-60	H-60
	8BHWG-55	55	8G5546	55/46	8G5541	55/41			H-55	H-55
14BHW	14BHWG-115	115	14G11505	115/05	14G11500	115/00	14G11595	115/95	H-115	H-115
	14BHWG-110	110	14G11000	110/00	14G11095	110/95	14G11090	110/90	H-110	H-110
	14BHWG-105	105	14G10595	105/95	14G10590	105/90	14G10585	105/85	H-105	H-105
	14BHWG-100	100	14G10090	100/90	14G10085	100/85	14G10080	100/80	H-100	H-100
	14BHWG-95	95	14G9585	95/85	14G9580	95/80	14G9575	95/75	H-95	H-95
	14BHWG-90	90	14G9080	90/80	14G9075	90/75	14G9070	90/70	H-90	H-90
30BHW	30BHWG-155	155	30G15545	155/45	30G15530	155/30	30G155120	155/120	H-155	H-155
	30BHWG-145	145	30G14530	145/30	30G14520	145/20	30G145115	145/115	H-145	H-145
	30BHWG-130	130	30G13020	130/20	30G13010	130/10	30G13010	130/10	H-130	H-130
	30BHWG-120	120	30G12010	120/10	30G12005	120/05	30G12000	120/00	H-120	H-120
	30BHWG-115	115	30G11505	115/05	30G11500	115/00	30G11595	115/95	H-115	H-115
	30BHWG-110	110	30G11000	110/00	30G1095	110/95	30G1090	110/90	H-110	H-110
30BHWG-95	30BHWG-95	95	30G9585	95/85	30G9580	95/80	30G9585	95/85	H-95	H-95
	30BHWG-90	90	30G9080	90/80					H-90	H-90
	30BHWG-85	85								
	30BHWG-80	80								
	30BHWG-75	75								
	30BHWG-70	70								

1. Tapered sleeve with BHWG series working headWith, so that a single working head can match with more than one screwBolt size greatly improves applicability.
2. Super alloy steel manufacturing.
3. Transition sleeve of various specifications can be customized.



Reservoir Capacity: **8 L**
 Flow at Rated Pressure: **0.85-8L/min**
 Motor specification: **1.1 Kw**
 Maximum Operating Pressure: **70 MPa**



Features & Benefits

1. Three-stage pump design, fast speed, high efficiency, than the ordinary two-stage pump efficiency improvement of at least 50%.
2. Easy operation of electromagnetic commutation.
3. Adopt EXD II CT4 type three-phase motor, safety, large output torque, low noise, high efficiency
4. The electric control system is made of explosion-proof electric control module
5. Large capacity aluminum tank for better heat dissipation, longer continuous working time.
6. Explosion-proof electromagnetic CT4 explosion-proof grade, equipped with CT4 type explosion-proof button, easy to operate.

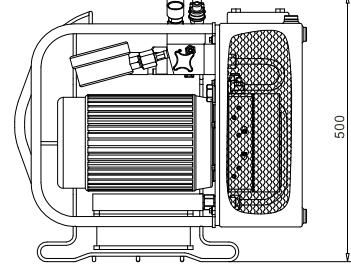
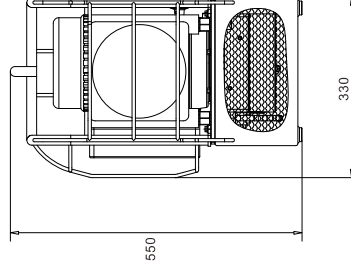
Model Number	Name	Oil Flow			Motor	Pressure	Power	Power Cord Length	Net Weight	Size
		Low pressure	Middle pressure	High pressure						
PFBW2205	Explosion-proof Wrench Pump	8	1.7	0.85	1.1	Low pressure 7 Middle pressure 28 High pressure 70	220V/50Hz 115V/60Hz	5	50	490*350*470



Reservoir Capacity: **10 L**
 Flow at Rated Pressure: **1.6-16.5L/min**
 Motor specification: **2.2 KW**
 Maximum Operating Pressure: **70 MPa**

Features & Benefits

1. Using the three-stage pump design, fast speed and high efficiency, more than twice the speed of the ordinary three-stage pump.
2. Standard with one out of four modules, can drive four wrenches at the same time, high efficiency.
3. Standard with large flow air cooler, can work for a long time
4. Large capacity aluminum tank for better heat dissipation, longer continuous working time.



Model Number	Name	Oil Flow			Motor	Pressure	Power	Power Cord Length	Net Weight	Size
		Low pressure	Middle pressure	High pressure						
Bw4000	High Flow Wrench Pump	16.5	3.2	1.6	2.2	Low pressure 7 Middle pressure 28 High pressure 70	380V/50Hz 480V/60Hz	5	39.5	470*340*470



Reservoir Capacity: **8 L**
 Flow at Rated Pressure: **0.8-8L/min**
 Motor specification: **1.1 Kw**
 Maximum Operating Pressure: **70 MPa**

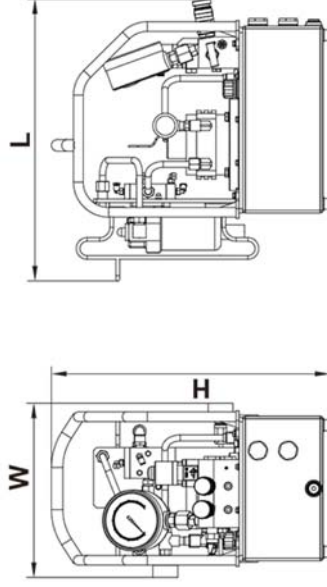
Features & Benefits

1. The accessories are of international famous brands, energy saving, environmental protection and high efficiency.
2. The working efficiency is at least 30% higher than that of ordinary two-stage pump.
3. External motor start switch, convenient for remote operation.
4. Specially designed pressure regulating valve can work continuously for a long time with stable pressure.
5. High-power brushless motor, maintenance-free, long service life.
6. With long life design, it can be started at any time under pressure, with light weight, fast speed, large flow rate and high efficiency.
7. The use of special integrated circuit board can be achieved: 1 minute automatic shutdown without operation, automatic pressure relief after stopping, motor overload protection.
8. Automatic switching of output of three kinds of pressure and three kinds of flow to maximize work efficiency
9. Two hydraulic wrenches can be driven simultaneously with standard configuration (another 4 can be driven simultaneously)
10. aluminum titanium alloy manufacturing tank, pump body, small mass, easy to carry
11. Gauge with 100 precision, ensuring a high torque accuracy of the wrench
12. Freely adjust the output pressure in the range of 40-700bar
13. Equipped with radiator, it can work continuously for 24 hours
14. Provide motors of different voltages/frequencies according to customer requirements

Model Number	Oil Flow			Pressure	Reservoir Capacity	Input Adapter	Output Adapter	Weight	Dimensions	
	Low pressure	Middle pressure	High pressure							L
BWPE	8	1.8	0.8	7	28	70	220V/50Hz	1.1	26	420*260*440



Reservoir Capacity: **8 L**
 Flow at Rated Pressure: **1.1-8.3L/min**
 Motor specification: **4 HP**
 Maximum Operating Pressure: **70 MPa**



Features & Benefits

BWPA is assembled in an integrated way for pneumatic and hydraulic wrench pump. Oil pump, control valve, oil tank, pneumatic motor, cooler, instrument, etc. Composed of an independent complete hydraulic device, with small volume, weight, light weight, simple structure, convenient operation and high working pressure. Pump is high and low pressure oil pumps supply oil at the same time, which can obtain large output oil. When pressing, the low-pressure pump automatically returns the oil without load through the unloading overflow valve, which can reduce the work rate of consumption, and (port A) oil pressure can be arbitrary in 7-70MPa To adjust.

- pneumatic three - level flow hydraulic torque wrench pump
- multiple consecutive torque wrench operations are available
- with oil cooler, suitable for continuous operation, steel frame with outer protection
- Φ100 pressure gauge, aluminum alloy fuel tank oil level indicator
- All kinds of pressure adjustment between 7-70MPa
- design for continuous operation, optional number of hose meters

BWPA pneumatic and hydraulic wrench pump parameters table	
Working pressure	70 MPa
Type drive	pneumatic
Gas consumption	≥3.4m³/min
Work rate	4.0 HP
Volume capacity	8 L
Flow	8.3-1.9-1.1 L/min
Cooler	Yes
Weight	20.5 Kg
Oil outlet	4 × 1/4" NPT
Input source	0.4-0.8 MPa
L × W × H (mm)	468 × 289 × 460

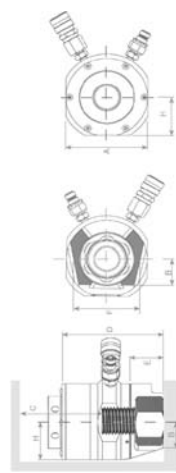


Thread Capacity:
M20-M100
3/4"-4"

Bolt Load:
180-3109KN

Max.Ram Stroke:
15 mm

Maximum Operating Pressure: **150 MPa**

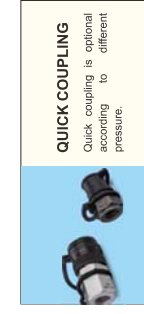
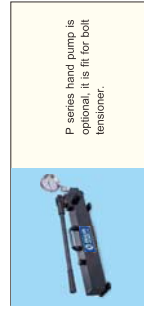


Features & Benefits

1. Light weight, compact structure and high precision;
2. The surface is rust-proof and corrosion-resistant;
3. Strong universality, it can be applied to bolt drawing of multiple specifications by replacing the drawing head;
4. Spring automatic reset, suitable for frequent use;
5. Multiple stretchers can be drawn synchronously;
6. The maximum working pressure is 150MPa, which can be equipped with high-pressure manual pump, high-pressure pneumatic pump and high-pressure electric pump;
7. High accuracy, fast speed and safe use.

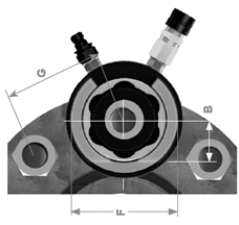
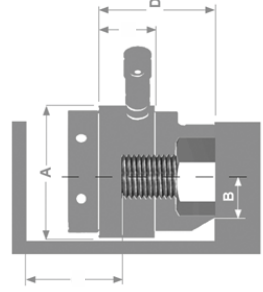
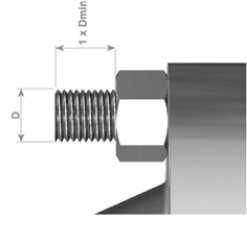
Interchangeability, spring return

No.	Model Number		Thread Size		Bolt Load		Ram Area		Stroke	Weight	A	B	C	D	E	F	G	H
	Imperial	Metric	Inch	mm	KN	Ton	ln ²	lbn ²										
BST1	BST1-0750 U08	3/4"-10UNC	M20x2.5	180.25	18.09	1.86	1201.93	15	2.62	72.00	21.50	90.00	99.50	66.50	61.75	49.00	36.00	
	BST1-0875 U09	7/8"-9UNC	M22x2.5						2.68		24.75	89.25	100.75		72.00	57.50		
	BST1-20750 U10	3/4"-10UNC	M20x2.5	236.06	23.69	2.44	1573.55	15	3.24	80.50	21.00	90.00	99.50	66.50	59.75	49.00	38.80	
BST2	BST2-0875 U09	7/8"-9UNC	M22x2.5						3.32		25.00	59.25	100.75		70.00	56.50		
	BST2-1000 U08	1"-8UNC	M24x3						3.41		28.00	90.00	104.00		80.50	64.25		
	BST3-0875 U09	7/8"-9UNC	M22x2.5	380.38	38.18	3.93	2536.12	15	5.21	99.00	24.75	93.00	104.50	71.50	59.50	47.90		
BST3	BST3-1000 U08	1"-8UNC	M24x3						5.25		27.50	93.00	107.00		80.50	64.25		
	BST3-1125 U08	1.1/8-8UNC	M27x3						5.53		28.00	96.00	113.50		90.75	72.00		
	BST3-1250 U08	1.1/4"-8UNC	M30x3.5						5.54		35.00	94.00	114.00		85.00	69.00		
BST4	BST4-1250 U08	1.1/4"-8UNC	M30x3.5						5.56		34.50	95.00	114.50		89.88	75.00		
	BST4-1375 U08	1.3/8"-8UNC	M36x4						5.84	408.00	15.876	116.50	135.50	97.00	90.75	75.00	56.50	
	BST4-1500 U08	1.1/2"-8UNC	M39x4						8.71		35.00	121.00	136.00		85.00	72.00		
BST5	BST5-1625 U08	1.5/8"-8UNC	M42x4.5						9.02		35.00	122.00	140.00		89.88	77.00		
	BST5-1750 U08	1.3/4"-8UNC	M45x4.5						9.08		42.00	121.00	142.00		95.14	83.00		
	BST5-1875 U08	1.3/8"-8UNC	M36x4						9.08		39.00	121.00	145.00		93.41	85.00		
BST6	BST6-1900 U08	1.7/8"-8UNC	M48x5						12.93		45.00	131.50	152.50	107.50	96.14	83.00	63.38	
	BST6-2000 U08	2"-8UNC	M52x5						13.09		45.00	136.00	159.00		100.53	88.00		
	BST6-2250 U08	2.1/4"-8UNC	M60x5.5						13.42		46.00	136.00	162.00		119.72	103.00		
BST7	BST7-2500 U08	2.1/2"-8UNC	M64x6						15.67	149.25	48.00	135.75	158.75	107.50	111.54	96.00	72.53	
	BST7-2750 U08	2.3/4"-8UNC	M72x6						16.01		46.50	137.50	166.50		113.52	103.00		
	BST7-3000 U08	3"-8UNC	M76x6						16.00		53.00	135.00	168.50	120.47	110.00			
BST8	BST8-3250 U08	3.1/2"-8UNC	M85x6						24.30	179.50	55.00	141.25	170.24	109.50	121.45	107.00	87.50	
	BST8-3500 U08	3.1/2"-8UNC	M90x6						24.85		55.00	142.50	176.00		128.42	114.00		
	BST8-3750 U08	3.3/4"-8UNC	M96x6						24.89		59.00	146.25	180.75		132.61	119.00		
BST9	BST9-4000 U08	4"-8UNC	M100x6						24.26		60.00	145.50	182.00		144.80	127.00		
	BST9-4250 U08	4.1/4"-8UNC	M106x6						24.81		67.00	141.50	182.00		144.80	130.00		
	BST9-4500 U08	4.1/2"-8UNC	M112x6						33.68	206.75	65.00	151.25	184.75	110.50	134.60	119.00	103.40	
BST10	BST10-4750 U08	4.3/4"-8UNC	M120x6						34.60		60.00	145.50	183.00		170.00	137.00		
	BST10-5000 U08	5"-8UNC	M127x6						34.64		66.00	152.50	194.00		144.80	130.00		
	BST10-5250 U08	5.1/4"-8UNC	M136x6						32.83		70.00	151.00	196.50	160.00	141.00			
BST11	BST11-5500 U08	5.1/2"-8UNC	M146x6						35.08		76.00	147.75	197.25		158.23	146.00		
	BST11-5750 U08	5.3/4"-8UNC	M156x6						34.73		80.50	146.75	198.75		169.93	151.00		
	BST11-6000 U08	6"-8UNC	M162x6						48.60	239.00	80.00	154.75	204.25	112.50	170.18	149.00	119.50	
BST12	BST12-6250 U08	6.1/4"-8UNC	M172x6						48.86		81.00	160.75	211.75		169.93	151.00		
	BST12-6500 U08	6.1/2"-8UNC	M182x6						47.70		78.00	158.50	213.50	190.00	164.00			
	BST12-6750 U08	6.3/4"-8UNC	M192x6						50.82		88.00	159.00	219.00		181.37	160.00		
BST13	BST13-7000 U08	7"-8UNC	M201x6						51.08		94.00	158.50	223.50		187.38	172.00		
	BST13-7250 U08	7.1/4"-8UNC	M211x6						59.28	257.50	87.00	165.00	223.00	112.50	181.37	163.00	128.80	
	BST13-7500 U08	7.1/2"-8UNC	M221x6						60.07		95.50	166.50	229.50		187.38	171.00		
BST14	BST14-7750 U08	7.3/4"-8UNC	M231x6						58.69		100.00	157.75	225.75		209.44	185.00		
	BST14-8000 U08	8"-8UNC	M241x6						56.90		105.00	152.00	223.50		215.64	194.00		
	BST14-8250 U08	8.1/4"-8UNC	M251x6															





Thread Capacity: **M20-M100**
3/4"-4"
 Bolt Load: **228-2643KN**
 Max Ram Stroke: **10-15 mm**
 Maximum Operating Pressure: **150 MPa**



Interchangeability, spring return

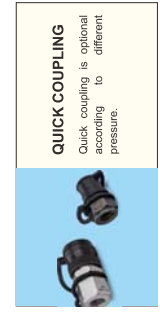
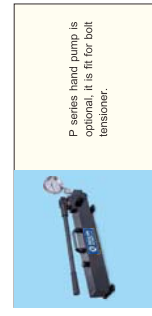


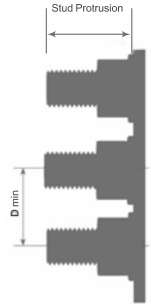
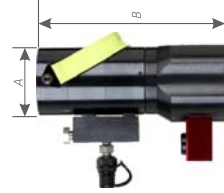
It is connected one by one to realize synchronous

Features & Benefits

1. Light weight, compact structure and high precision.
2. The surface is rust-proof and corrosion-resistant.
3. Strong universality, it can be used for multi-specification bolt drawing by replacing the bit drawing head.
4. Gravity reset.
5. Multiple stretchers can draw synchronously.
6. The maximum working pressure is 150MPa, which can be equipped with manual pump, pneumatic pump and electric pump.
7. High accuracy, long service life and safe use.
8. It is suitable for the stretching of single specification bolt, and more than one stretcher can be used in the same group.

No.	Model Number		Thread Size		Model Number		Bolt Load		Ram Area		Stroke mm	Weight kg	mm					
	Imperial	Metric	Inch	mm	Metric	KN	Ton	In ²	Ton ²	A			B	C	D	E	F	G
BTG1	BTG1-0750 U10	3/4"-10UNC	M20x2.5	BTG1-M2025	227.81	22.86	2.354	1518.76	10	2.0	73.5	21.0	67.0	71.0	45	62	49.5	
	BTG1-0875 U09	7/8"-9UNC	M22x2.5	BTG1-M2225						1.9	24.0	64.0	71.0		63	53		
	BTG1-1000 U08	1"-8UN	M24x3	BTG1-M2430						1.9	24.0	69.0	78.0		69	58.5		
	BTG1-1125 U08	1-1/8-8UN	M27x3	BTG1-M2730						1.9	24.0	66.0	79.0		74	63.5		
	BTG2-1125 U08	1-1/8-8UN	M27x3	BTG2-M2730	443.00	44.46	4.578	2953.69	15	4.8	102	27.0	85.0	92.0	54	82	67.6	
BTG2	BTG2-1250 U08	1-1/4"-8UN	M30x3.5	BTG2-M3035						4.9	32.0	85.0	93.0		85	69		
	BTG2-1250 U08	1-1/4"-8UN	M33x3.5	BTG2-M3335					4.6	31.0	84.0	95.0		85	72			
	BTG2-1375 U08	1-3/8"-8UN	M36x4	BTG2-M3640					4.6	34.0	84.0	98.0		91	78			
	BTG3-1500 U08	1-1/2"-8UN	M39x4	BTG3-M3940					4.7	36.5	82.0	100.0		90	80			
	BTG3-1500 U08	1-1/2"-8UN	M39x4	BTG3-M3940	810.85	81.38	8.379	5405.70	15	9.5	133	36.5	98.0	109.0	56	97	83.5	
BTG3	BTG3-1625 U08	1.5/8"-8UN	M42x4.5	BTG3-M4245					9.0	37.5	93.0	107.0		110	92.5			
	BTG3-1750 U08	1-3/4"-8UN	M45x4.5	BTG3-M4545					9.3	40.5	98.5	116.0		115	98			
	BTG3-1875 U08	1-7/8"-8UN	M48x5	BTG3-M4850					9.0	42.5	95.0	116.0		116	101			
	BTG3-2000 U08	2"-8UN	M52x5	BTG3-M5250					8.6	50.0	93.5	117.0		120	106			
	BTG4-1875 U08	1-7/8"-8UN	M48x5	BTG4-M4850	1273.16	127.78	13.159	8489.96	15	16.1	163	43.5	106.0	118.0	57	130	108	
BTG4	BTG4-2000 U08	2"-8UN	M52x5	BTG4-M5250					15.7	46.0	102.5	117.0		124	108			
	BTG4-2250 U08	2-1/4"-8UN	M56x5.5	BTG4-M5655					15.8	55.0	103.0	123.0		134	118.5			
	BTG4-2500 U08	2-1/2"-8UN	M60x5.5	BTG4-M6055					18.3	54.0	121.5	145.5		150	127			
	BTG4-2500 U08	2-1/2"-8UN	M64x6	BTG4-M6460					15.1	58.0	102.5	130.0		147	130.5			
	BTG5-2500 U08	2-1/2"-8UN	M64x6	BTG5-M6460	1828.99	183.56	18.905	12196.45	15	22.7	193	64.0	107.5	133.0	60	147	130.5	
BTG5	BTG5-2500 U08	2-1/2"-8UN	M68x6	BTG5-M6860					23.6	80.0	111.0	141.0		160	138			
	BTG5-2750 U08	2-3/4"-8UN	M72x6	BTG5-M7260					24.7	72.0	115.0	147.0		161	143			
	BTG5-3000 U08	3"-8UN	M76x6	BTG5-M7660					22.2	77.0	108.0	146.0		170	153			
	BTG6-3000 U08	3"-8UN	M76x6	BTG6-M7660	2643.43	265.30	27.323	17627.48	15	38.5	233	77.0	120.0	153.0	64	170	153	
	BTG6-3250 U08	3-1/4"-8UN	M80x6	BTG6-M8060					38.3	78.0	117.0	154.0		178	155.5			
BTG6	BTG6-3500 U08	3-1/2"-8UN	M85x6	BTG6-M8560					38.1	78.0	114.0	154.0		182	165.5			
	BTG6-3750 U08	3-3/4"-8UN	M90x6	BTG6-M9060					37.0	86.0	114.0	160.0		191	174.5			
	BTG6-4000 U08	4"-8UN	M95x6	BTG6-M9560					37.0	99.0	116.0	168.0		210	183.5			
	BTG6-4000 U08	4"-8UN	M100x6	BTG6-M10060					36.4	105.0	116.0	174.0		220	200			





Thread Capacity: **M30-M64**
 Bolt Load: **465-2221KN**
 Max. Ram Stroke: **8-10 mm**
 Maximum Operating Pressure: **150 MPa**



BAT ultra-high pressure pneumatic pump is optional



Hose
 You can choose Ultra-high pressure hose according to pressure.



BET ultra-high pressure electric pump is optional

Features & Benefits

1. Light weight, compact structure, suitable for small space;
2. Special steel, the surface after rust treatment, corrosion resistance;
3. Double-stage cylinder design, increase tensile length;
4. Spring automatic return, suitable for frequent use;
5. Standard working pressure is 150MPa, which can be equipped with high-pressure manual pump, high-pressure pneumatic pump and high-pressure electric pump;
6. Compact structure, convenient operation and high precision.

Model number	Bolt Diameter	Stud Protrusion		Max Stroke	Maximum Load	Hydraulic Pressure Area		Diameter		Height	D	Weight
		Min	Max			mm ²	in ²	A	B			
BTW4B	M30	59	69	8	465.38	104622	3447.21	5.343	72	205	64	6.16
BTW5B	M33	64	73	10	575.8	129444	4266.09	6.611	79	217.5	71	7.24
BTW6B	M36	71	81	10	678.26	152478	5024.05	7.787	84.5	229.5	77	8.75
BTW8B	M39	76	86	10	810.58	182225	6004.2	9.307	92	263	83	11.12
BTW9B	M42	83	93	10	929.67	208989	6686.37	10.674	97	262.5	95	12.75
BTW10B	M45	88	98	10	1079.48	242682	7996.12	12.394	155	275.5	94.5	15.86
BTW12B	M48	94	104	10	1221.57	274620	9048.57	14.025	111	286.5	100.5	17.84
BTW16B	M56	110	120	10	1686.19	379070	12490.29	19.359	132	314	115	26.5
BTW22B	M64	124	134	10	2221	499300	16461.3	25.515	150	352	124	35



Tip Clearance: **6mm**
 Maximum Spread : **81 mm**
 Maximum Spread Force: **8-14ton**
 Maximum Operating Pressure: **70 MPa** (FSH-14)

Features & Benefits

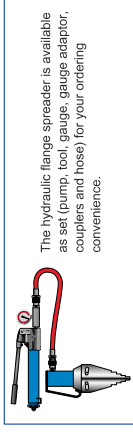
1. For maintenance, commissioning, shut-downs, testing and valve change outs
2. Integrated wedge concept: Friction-free, smooth and parallel wedge movement eliminates flange damage and spreading arm failure
3. Unique interlocking wedge design - no first step bending and risk of slipping out of joint
4. Requires very small access gap of only 6 mm
5. Stepped spreader arm design - each step can spread under full load
6. Few moving parts mean durability and low maintenance

Stepped Blocks PFS-1

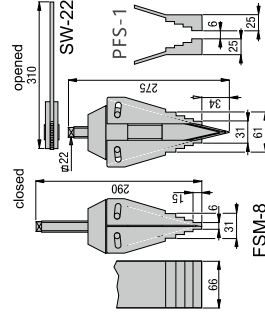
Use stepped blocks to increase wedge opening up to 80 mm. Fits both FSH-14 and FSH-8.



Separate and repair flange with FSH-14 flange separator.



The hydraulic flange spreader is available as set (pump, tool, gauge, gauge adaptor, couplers and hose) for your ordering convenience.



Maximum Spreading Force ton (kN)	Model Number	Tip Clearance (mm)	Maximum Spread ¹⁾ (mm)	Spreader Type	Oil Capacity (cm ³)	Weight (kg)
14(125)	FSH-14	6	81	Hydraulic	78	7.1
8(72)	FSH-8	6	81	Mechanical	-	6.5

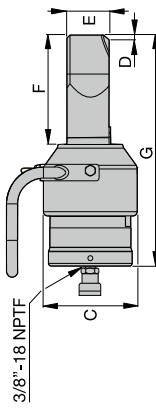
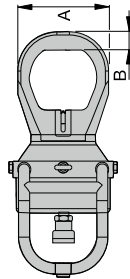
¹⁾ Using stepped blocks PFS-1

Power and Precision High Performance Nut Splitter



Blade Cutting Depth Scale
Adjustable cutting depth scale for controlled blade extension, which avoids damage to bolt threads. The scale indicates the bolt range in metric and imperial values on each cutting head.

Capacity: **917-1711kN**
Hexagon Nut Size: **70-130mm**
Bolt Range: **M45-M90**
Maximum Operating Pressure: **70 Mpa**



Features & Benefits

- Specially designed to suit standard ANSI B16.5 / BS1560 flanges
- Single-acting (spring return) or double-acting cylinder
- Tri-blade technology provides three cutting surfaces on a single blade
- Interchangeable heads provide maximum nut range flexibility
- Preset scale allows controlled blade extension, which avoids damage to bolt threads
- Grip tape and handle included for more secure manoeuvrability
- Nickel-plated cylinder body for excellent corrosion protection and improved durability in harsh environments
- Internal Pressure Relief Valve for overload protection



Heavily corroded and weathered nuts are quickly split and removed using a NS-Series Nutsplitter.

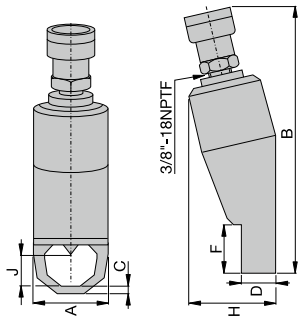
▼ NUT SPLITTER SPECIFICATIONS

Bolt Range (mm)	Hexagon Nut Range (mm)	Capacity ton (kN)	Oil Capacity (cm ³)	Model Number	Dimensions (mm)						Hydraulic Cylinder (kg)	Cutting Head	Replacement Blade		
					A	B	C	D	E	F				G	
M45 - M52	70 - 80	103 (917)	377	NS-7080	132	28	180	8.0	81	186	412	37.0	NSC-70	NSH-7080	NSB-70
M45 - M56	70 - 85	103 (917)	377	NS-7085	145	30	180	8.0	81	196	422	37.0	NSC-70	NSH-7085	NSB-70
M45 - M64	70 - 95	103 (917)	377	NS-7095	160	32	180	8.0	81	201	432	38.5	NSC-70	NSH-7095	NSB-70
M45 - M72	70 - 105	103 (917)	377	NS-70105	174	35	180	9.0	81	209	443	39.5	NSC-70	NSH-70105	NSB-70
M76 - M80	110 - 115	193 (1711)	819	NS-110115	189	36	234	3.7	111	234	472	69.0	NSC-110	NSH-110115	NSB-110
M76 - M90	110 - 130	193 (1711)	819	NS-110130	219	41	234	2.5	111	242	483	71.5	NSC-110	NSH-110130	NSB-110



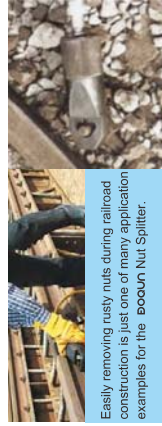
Hydraulic Nut Splitters are available as sets (pump, tool, gauge, gauge adaptor, couplers and hose) for your ordering convenience.

Capacity: **49-882kN(5-90ton)**
Bolt Range: **M6-M48**
Maximum Operating Pressure: **70 Mpa**



Features & Benefits

- Compact and ergonomically design, easy to use
- Unique angled head design
- Single-acting, spring return cylinder
- Heavy duty chisels can be reground
- Nut Splitters include spare chisel, spare set screw and wrench used to secure the chisel.
- Applications include service trucks, piping industry, tank cleaning, petrochemical, steel construction, mining, etc.



Easily removing rusty nuts during railroad construction is just one of many application examples for the Bodum Nut Splitter.

▼ NUT SPLITTER SPECIFICATIONS

Bolt Range (mm)	Hexagon Nut (mm)	Capacity ton (kN)	Oil Capacity (cm ³)	Model Number	Dimensions (mm)						Replacement Chisel Model Number	Weight (kg)	
					A	B	C	D	F	H			J
M6 - M12	10 - 19	5 (49)	15	NC-1319	40	170	7	19	28	48	21	1.2	NCB-1319
M12 - M16	19 - 24	10 (98)	20	NC-1924*	54	191	10	26	40	62	25	2.0	NCB-1924
M16 - M22	24 - 32	15 (147)	60	NC-2432*	64	222	13	29	51	72	33	4.0	NCB-2432
M22 - M27	32 - 41	20 (196)	80	NC-3241*	75	244	17	36	66	88	43	4.4	NCB-3241
M27 - M33	41 - 50	35 (343)	155	NC-4150	94	288	21	45	74	105	54	8.2	NCB-4150
M33 - M39	50 - 60	50 (490)	240	NC-5060	106	318	23	54	90	128	60	11.8	NCB-5060
M39 - M48	60 - 75	90 (882)	492	NC-6075	156	393	26	72	110	181	80	34.1	NCB-6075

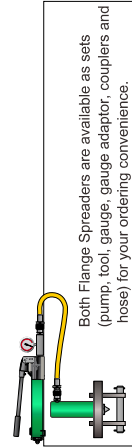


Capacity: **5 -10ton**
 Spread: **70-216mm**
 Maximum Operating Pressure: **70 Mpa**



Features & Benefits

- Lightweight, ergonomic design for ease of use
- Adjustable jaw widths from 70 mm to 216 mm for a wide range of applications
- Single-acting, spring return RC-Series cylinders for fast trouble-free operation.



Both Flange Spreaders are available as sets (pump, tool, gauge, gauge adaptor, couplers and hose) for your ordering convenience.

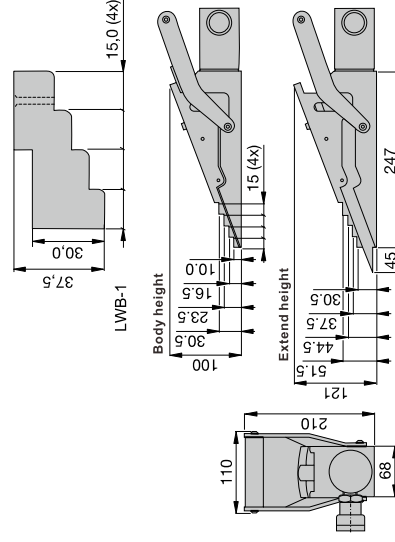
Maximum Flange Thickness (mm)	Stud Size (mm)	Standard Wedge (mm)	Capacity (ton)	Stroke (mm)	Oil Capacity (cm ³)	Model Number	Dimensions (mm)													
							C		D		E		F		H		I		J	
							Min.	Max.	Min.	Max.	Min.	Max.	Min.	Max.	Min.	Max.	Min.	Max.	Min.	Max.
2 X 57	19 - 28	3 - 28	5	38	24.6	FS-56	76	209	70	155	32	196	88	25	206	19	11.5			
2 X 92	31- 41	3 - 28	10	54	78.7	FS-109	108	279	104	216	50	152	114	38	273	31	18.1			



Maximum Lifting Force: **16 ton(157kN)**
 Lifting Stroke: **21mm**
 Tip Clearance/Maximum Spread: **10mm/81.5mm**
 Maximum Operating Pressure: **70 MPa**

Features & Benefits

- Requires very small access gap of only 10mm
- Lifting force 16 ton at 700 bar hydraulic pressure
- Each step can spread under full load
- Straight vertical lifting
- Unique interlocking wedge design: no first step bending and risk of slipping out
- Single-acting spring return cylinder
- Lifting wedge LW-16 includes safety block SB-2



For lifting heavy equipment with minimum floor clearance the LW-16 is the ideal tool.



Maximum Lifting Force ton (kN)	Lifting Stroke (mm)	Model Number	Tip Clearance (mm)	Maximum Operating Pressure (bar)	Oil Capacity (cm ³)	Oil Capacity (kg)
16 (157)	21	LW-16	10	700	78	9.0

Use optional stepped block LWB-1 to increase wedge lifting height by 30 mm.

* Using LWB-1.



Reservoir Capacity: **3.5-6L**
 Air supply: **4-8bar**
 Oil Flow: **0.3-0.57 L/min**
 Maximum Operating Pressure: **150-280 MPa**



QUICK COUPLING
 Quick coupling is optional according to different pressure.



Hose
 You can choose Ultra-high pressure hose according to pressure.



Hydraulic tools
 This ultra-high pressure pneumatic pump is fit for hydraulic tools over 700 bar pressure.

Features & Benefits

1. Compress air by pneumatic, no electric arc or spark, especially suitable for the application of anti-explosion.
2. Low noise, running reliability, moving easily, low maintenance cost.
3. Pump will stop working automatically at setting pressure.
4. Equips with hand-operated shank, can be Manual drive or pneumatic drive.
5. Input gas source pressure is: 4-8 Bar.
6. High precision gas pressure reducer to regulate the gas precisely.
7. Adjust the pressure through manual pressure control valve or pneumatic control valve.
9. Independent output with multi branches is available, which can connect several tensioners (can shut solely or totally in the same time.)



Reservoir Capacity: **8L**
 Motor specification: **1.1KW**
 Oil Flow: **0.4-2 L/min**
 Maximum Operating Pressure: **150 MPa**



QUICK COUPLING
 Quick coupling is optional according to different pressure.



Hose
 You can choose Ultra-high pressure hose according to pressure.



Hydraulic tools
 This ultra-high pressure pneumatic pump is fit for hydraulic tools over 700 bar pressure.

Features & Benefits

- Portable tools to safely spread flange joints.
- Integrated wedge concept: Friction-free, smooth and parallel wedge movement eliminates flange damage and spreading arm failure.
- Unique interlocking wedge design - no first step bending and risk of slipping out of joint.
- Requires very small access gap of only 0.24 inch.
- Stepped spreader arm design - each step can spread under full load.
- Few moving parts mean durability and low maintenance.

Model Number	Oil Flow L/min	Pressure MPa	Reservoir Capacity L	Input Adapter inch	Output Adapter inch	Weight Kg	Dimensions L×W×H(mm)
BPA-150	0.3	150	3.5	1/2BSP	G1/4	16	340*320*380
BPA-200	0.57	200	6	1/2BSP	G1/4	24	380*360*380
BPA-280	0.35	280	6	1/2BSP	G1/4	24	380*360*380

Model Number	Oil Flow L/min		Pressure MPa	Reservoir Capacity L	Input Adapter KW	Output Adapter KW	Weight Kg	Dimensions L×W×H(mm)
	Low pressure	High pressure						
BEW-150	0.7	0.35	30	8	1.1	23.7	420*260*440	